

# firezone

simplified party wall system

*THE TRADITIONAL  
PARTY WALL HAS  
BEEN REINVENTED.*

CBMA LISTENED TO  
THE TRADES AND  
HAVE SIMPLIFIED  
THE PARTY WALL  
CONSTRUCTION  
PROCESS.

OFFERING SIMPLIFIED  
SYSTEM WITHOUT  
COMPROMISING  
ON QUALITY OR  
PERFORMANCE.

CBMA - SMARTER  
BUILDING SOLUTIONS

## **FASTER**

NO COMPLICATED COMPONENTS  
SIMPLIFIED CONSTRUCTION

## **STRONGER**

STRONGER THAN PLASTER  
MOULD AND MOISTURE RESISTANT

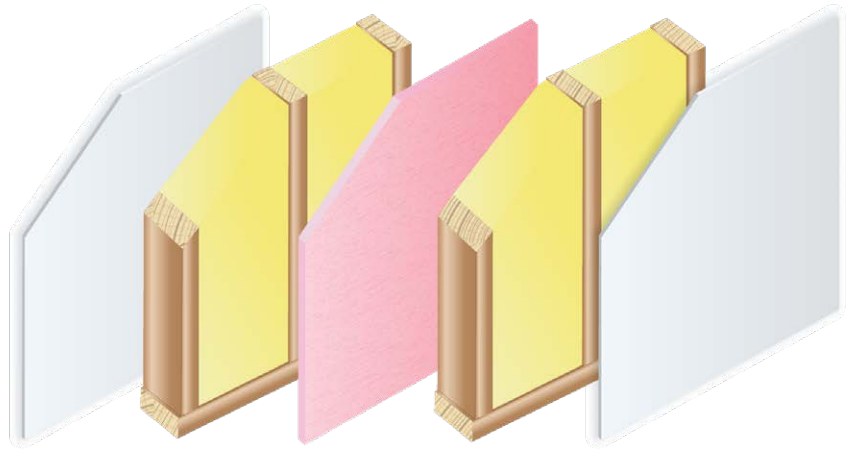
## **COST EFFECTIVE**

SAVE ON MATERIALS  
SAVE ON LABOUR  
SAVE ON TIME

FRL 60/60/60

# firezone

simplified party wall system



FIREZONE party wall system has been re designed to simplify the construction process, while ensuring that performance and quality is not sacrificed. CBMA listened to the trades and the construction professionals and have redeveloped the traditional party wall system, to save time, costs and installation issues such as mould, impact and other site hazards.

**IMPACT RESISTANT**  
**MOULD RESISTANT**  
**SIMPLE INSTALL**  
**MINIMAL COMPONENTS**

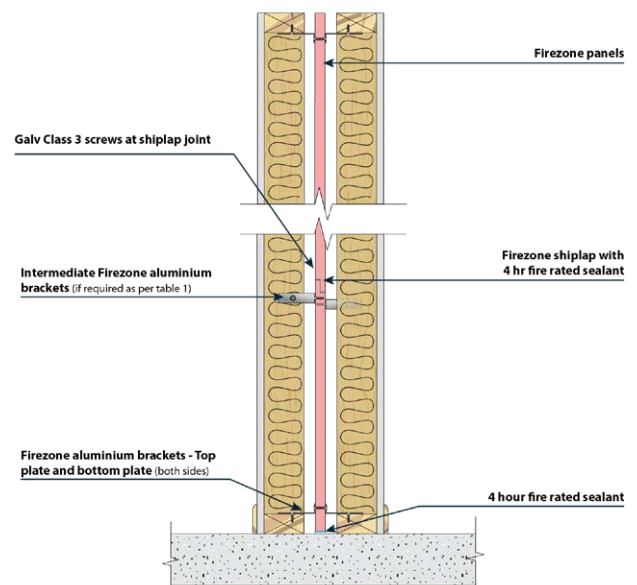
ITEM	COMMENTS
PANEL SIZE	2700x600 coverage
PANEL WEIGHT	26.5kg/m <sup>2</sup> (approx.)
WALL THICKNESS (NOM.)	262mm nom.
MIN / MAX CAVITY	20-40mm each side
FRL RATING	60/60/60 (WARRINGTON FIRE)
RW + CTR RATING	50DB (COGENT ACOUSTICS)

## SHIPLAP SYSTEM

CBMA reinvented the Party wall system by replacing the 'C' and 'H' Channels with our innovated Shiplap system. This allows the contractor to install without worrying about missing or damaged components, saving time and costs.

## FIRE TESTED

FIREZONE has been tested and assessed for fire and acoustic ratings by NATA accredited Labs such as Warrington Fire and CSIRO, ensuring that the system complies to all NCC and BCA requirements.



Example only. Refer to install guide for full details

FOR FULL SYSTEM DETAILS AND UPDATED DATA PLEASE REFER TO THE LATEST INSTALL GUIDE FORM OUR WEBSITE.